

(As on 24.09.2019)

Commodity Profile for Pulses -September, 2019

Contents

1. Pulses estimates for India (2018-19).....	2
2. Domestic Production of Major Pulses.....	2
3. Production of Pulses in India	3
4. India's export & import of Pulses	3
4.1 India's export of Major Pulses.....	3
4.2 India's import of Major Pulses	4
5. India's Trade Destination of Major Pulses for 2018-19.....	4
6. Movement of Domestic and International Prices.....	5
6.1 Peas (Matar).....	5
6.2 Chickpeas (Gram).....	5
6.3 Lentil (Masur).....	6
6.4 Tur (Arhar).....	6
6.5 Moong (Green Gram)	7
6.6 Urad (Black Gram)	7
7. Price movements of pulses in major domestic markets	8
8. Minimum Support Price (MSP)	8
9. Future Price of pulses.....	8
10. Trade Policy and Tariff Schedule.....	9
10.1 Export Policy	9
10.2 Import Policy	9
11. Status of Major Pulses under Foreign Trade Agreements.....	9
12. Significant changes for the month.....	10

1. Pulses estimates for India (2018-19)

(Unit: Million Tonnes)

Table-1: Pulses Production, Trade, and Consumption of India				
2017-18	2018-19	Particulars	2019-20	Sources
25.23	23.40#	Production	26.30^	DES
5.61	2.53	Total Imports	0.78##	DOC
30.84	25.93	Availability	27.08	--
0.20	0.28	Total Exports	0.08##	DOC
30.64	25.65	Total Availability for Domestic Consumption	27.00	--

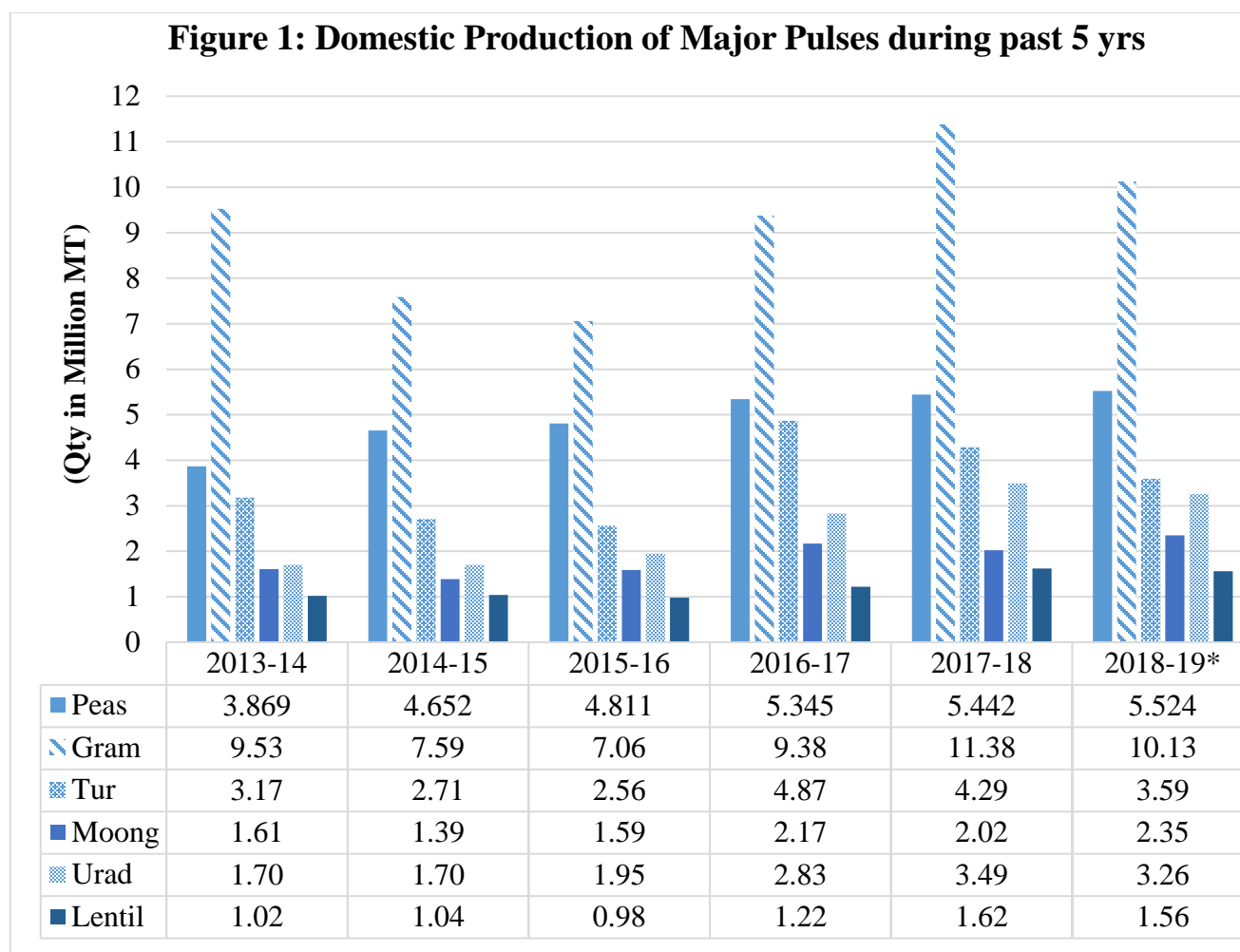
Source: Directorate of Economics and Statistics (DES), Department of Agriculture & Cooperation (DAC) and Department of Commerce (DoC)

#: As per 4th Adv Est. released for 2018-19. ^ Target fixed for 2019-20.

##: Export & import figures are for 2019-20 (Apr-Jul).

Note: Availability: Production plus Total Imports; Total Availability for Domestic Consumption: Availability minus Total export.

2. Domestic Production of Major Pulses



Source: Directorate of Economics and Statistics (DES)

* As per 4th Adv Est. for 2018-19.

3. Production Trend of Pulses in India

(Unit: Thousand Tonnes)

Pulses/Year	2016-17	% Share in Total Pulses production	2017-18	% Share in Total Pulses production	2018-19*	% Share in Total Pulses production
Tur	4870	21.1	4290	16.88	3590	15.34
Gram	9380	40.55	11380	44.77	10130	43.29
Moong	2170	9.38	2020	7.95	2350	10.04
Urad	2830	12.23	3490	13.73	3260	13.93
Lentil	1220	5.3	1620	6.37	1560	6.67
Other Pulses	2660	16.77	2542	10.00	2340	10.00
Total Pulses	23130		25420		23400	

Source: Directorate of Economics and Statistics (DES)

* As per 4th Adv Est. for 2018-19.

4. India's export & import of Pulses

4.1 India's export of Major Pulses

(Unit: Thousand Tonnes)

HS Code	Pulses/Year	2017-18	% Share in Total Pulses Export	2018-19	% Share in Total Pulses Export	2019-20 (Apr-Jul)	% Share in Total Pulses Export
07131000	Peas (Matar)	4.44	2.47	2.06	0.72	0.66	0.78
07132000	Chickpeas (Chana)	127.20	70.92	228.72	80.02	41.82	49.48
07133100	Moong/Urad	16.75	9.33	18.77	6.56	6.81	8.06
07134000	Lentils (Masur)	11.20	6.24	13.96	4.88	4.48	5.30
07136000	Pigeon Peas (Tur)	10.54	5.87	9.34	3.26	3.08	3.64
Total Pulses Exports		179.36		285.83		84.52	

Source: Department of Commerce

- Chickpeas contribute the single largest share in India's export basket of pulses registering 70.92% and 80.02% share in the total pulses export during 2017-18 and 2018-19 respectively.

4.2 India's import of Major Pulses

(Unit: Thousand Tonnes)

HS Code	Pulses	2017-18	% Share in Total Pulses Import	2018-19	% Share in Total Pulses Import	2019-20 (Apr-Jul)	% Share in Total Pulses Import
07131000	Peas (Matar)	2877.03	47.98	851.41	33.68	280.13	35.79
07132000	Chickpeas (Chana)	981.32	16.34	185.95	7.35	112.06	14.32
07133100	Moong/Urad	346.97	8.69	574.24	22.71	36.13	4.62
07134000	Lentils (Masur)	796.62	12.55	248.96	9.84	247.98	31.68
07136000	Pigeon Peas (Tur)	412.95	10.64	530.67	21.00	51.71	6.61
Total Pulses Imports		5607.53		2527.87		782.79	

Source: Department of Commerce

- Peas (Matar) form a major share in the total import of pulses followed by Moong/Urad and Pigeon Peas (Tur).

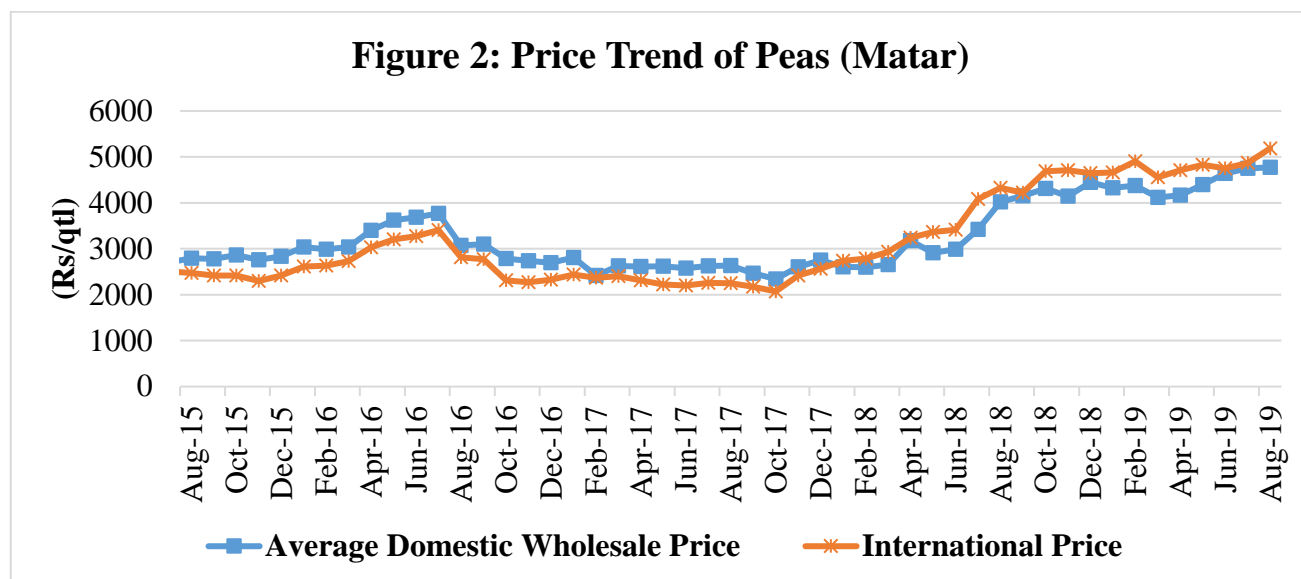
5. India's Trade Destination of Major Pulses for 2018-19

HS Code	Pulses	Top 5 Export Destinations	Top 5 Import Sources
07131000	Peas (Pisum Sativum)	Shri Lanka DSR (48.5%), Nepal (12.6%), U S A (11.1%), Australia (4.1%), Qatar (3.3%),	Canada (39.1%), Ukraine (20.4%), Russia (16.3%), Lithuania (5.5%), Netherland (4.2%)
07132000	Chickpeas (Garbanzos)	Algeria (20.8%), U Arab EMTS (9.8%), Shri Lanka DSR (8.4%), Turkey (6.9%), Morocco (5.4%)	Sudan (31.9%), Myanmar (20.2%), Tanzania (18.9%), Ethiopia (5.8%), USA (4.5%),
07133100	Moong/Urad	USA (37.7%), UK (12.4%), Canada (12.3%), Nepal (8.3%), Qatar (5.9%)	Myanmar (80.3%), Kenya (4.9%), Mozambique (2.9%), Australia (2.3%), Tanzania (2.0%)
07134000	Lentils (Masur)	Bangladesh (48.5%), Qatar (12.0%), Sri Lanka DSR (10.2%), USA (7.8%), Nepal (4.5%)	Canada (81.8%), Australia (6.2%), USA (4.2%), Netherland (4.2%), Singapore (2.6%)
07136000	Pigeon Peas (Tur)	USA (57.8%), Canada (15.7%), U Arab EMTS (6.8%), Australia (3.4%), Singapore (2.6%)	Mozambique (44.2%), Myanmar (30.2%), Tanzania (14.0%), Malawi (5.5%), Sudan (5.2%),

Source: Department of Commerce

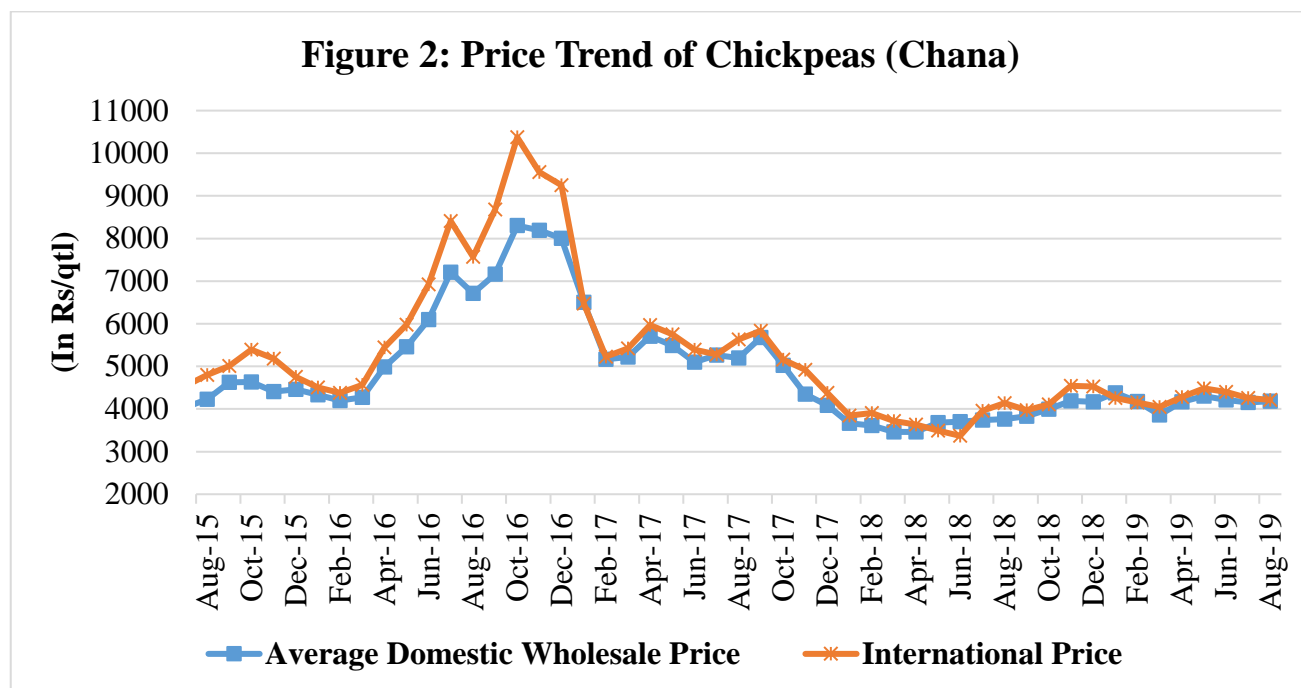
6. Movement of Domestic and International Prices

6.1 Peas (Matar)



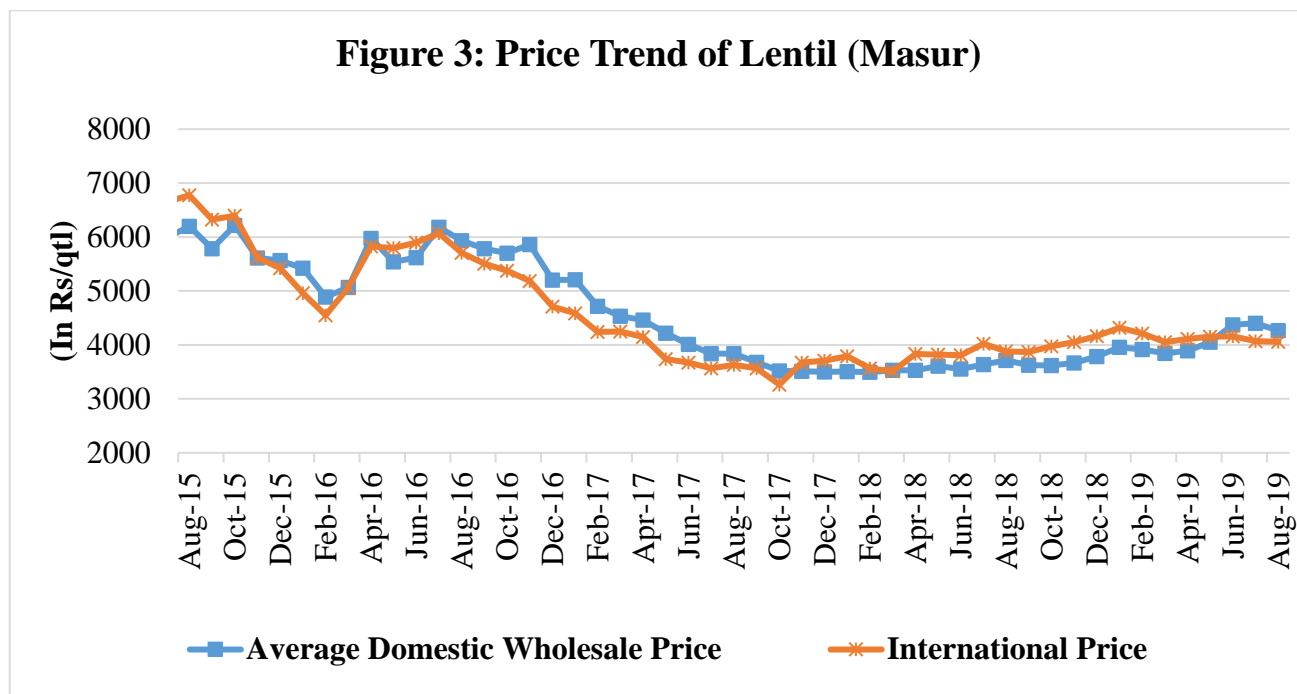
Source: Department of Agriculture & Cooperation (DAC), Agmarknet, and Agriwatch

6.2 Chickpeas (Gram)



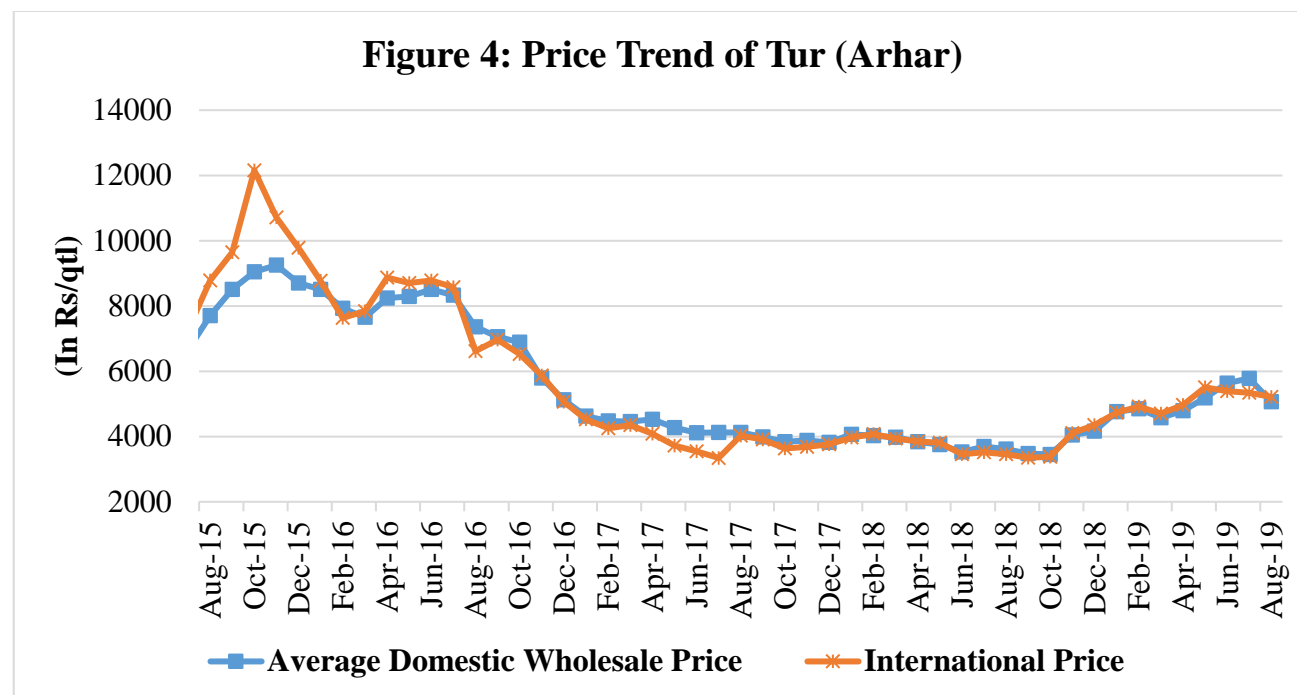
Source: Department of Agriculture & Cooperation (DAC), Agmarknet, and Agriwatch

6.3 Lentil (Masur)



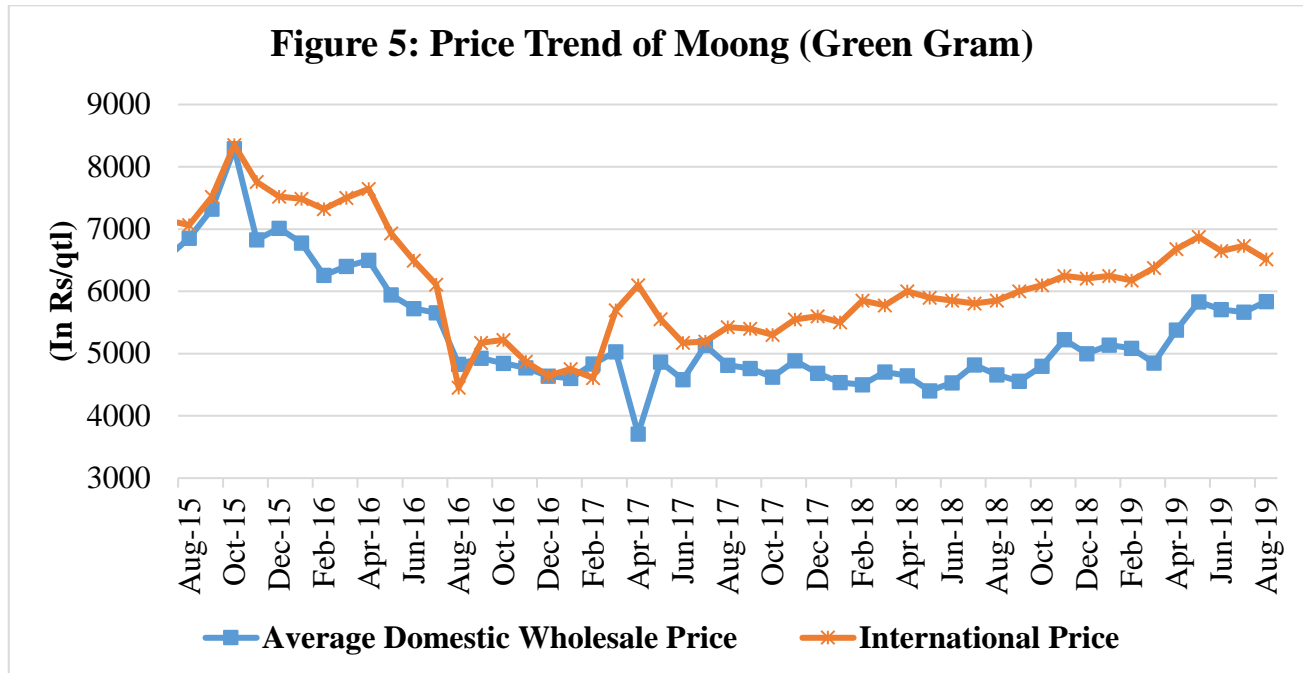
Source:-Department of Agriculture & Cooperation (DAC), Agmarknet, and Agriwatch

6.4 Tur (Arhar)



Source: Department of Agriculture & Cooperation (DAC), Agmarknet, and Agriwatch

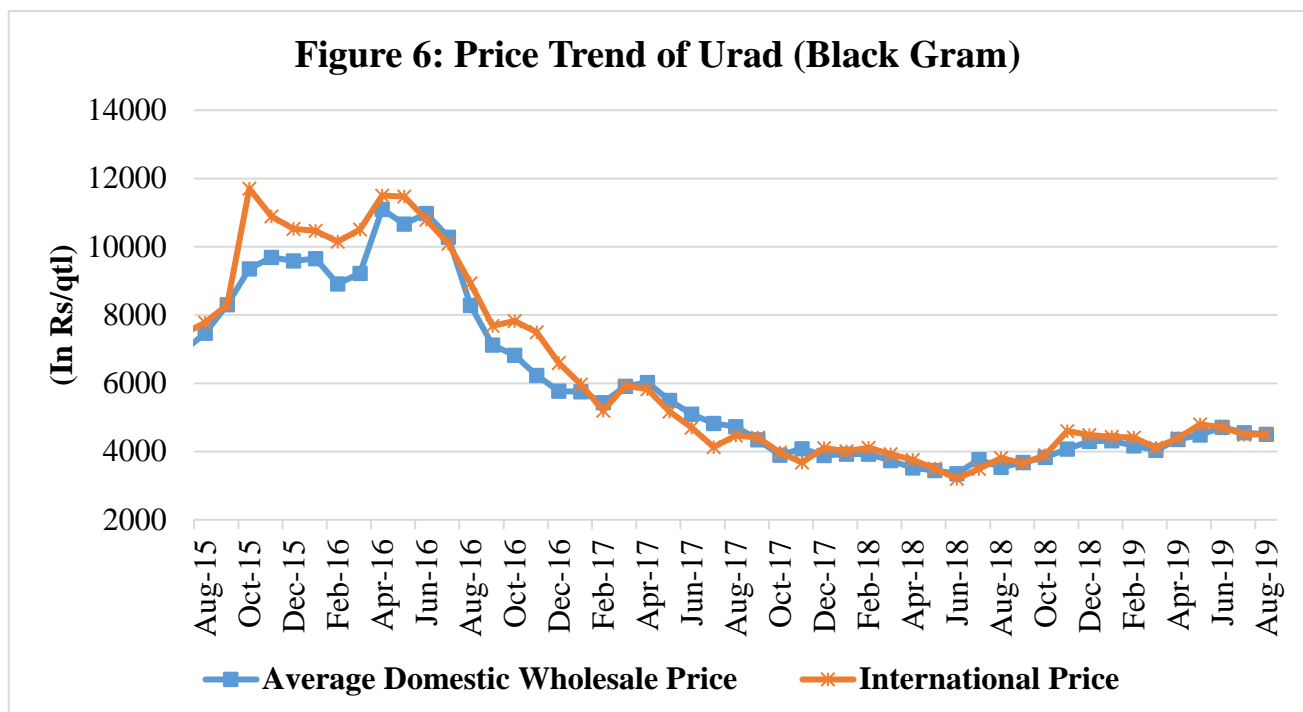
6.5 Moong (Green Gram)



Source: Department of Agriculture & Cooperation (DAC), Agmarknet, and Agriwatch

- The price fluctuations in the international markets were higher than that of in the domestic market. International prices are higher than domestic prices for Moong Dal.

6.6 Urad (Black Gram)



Source: Department of Agriculture & Cooperation (DAC), Agmarknet, and Agriwatch

7. Price Movement of pulses in major domestic markets:

Table 6: Price Movement for major pulses in Major Domestic Markets

Major Pulses	Mandies	(In Rs/qtl)				
		Jul-19	Aug-19	July-18	% Change (over previous month)	% Change (over previous year)
Chickpeas	Delhi	4331	4285	4304	-1.06	-0.44
	Indore	4255	4262	4139	0.16	2.97
	Bikaner	4268	4155	4225	-2.65	-1.66
Lentil	Kanpur	4409	4381	3957	-0.64	10.72
	Patna*	4827	4764	4147	-1.31	14.88
	Indore	4112	4171	3702	1.43	12.67
Tur	Gulberga	5889	5885	3896	-0.07	51.05
	Indore	5852	5976	3946	2.12	51.44
	Kanpur	5473	5479	4080	0.11	34.29
	Amravati	5767	5675	3705	-1.60	53.17
	Vijaywada	5245	5226	3422	-0.36	52.72
Urad	Jalgaon	5046	5105	4115	1.17	24.06
	Jaipur	4874	5079	4002	4.21	26.91
Moong	Vijaywada	6062	6202	5125	2.31	21.01
	Indore	5754	5995	4896	4.19	22.45
	Jaipur	6263	6300	5028	0.59	25.30

Source: Agriwatch

8. Minimum Support Price (MSP)

Pulses	2014-15	2015-16	2016-17	2017-18	2018-19	2019-20
Tur	4350	4625	5050	5450	5675	5800
Gram	3175	3500	4000	4400	4620	--
Moong	4600	4850	5225	5575	6975	7050
Urad	4350	4625	5000	5400	5600	5700
Lentil	3075	3400	3950	4250	4475	--

Sources: Commission for Agricultural Costs and Prices (CACP) (unit Rs /Qtl.)

9. Future price of pulses:

Chana Futures Contract(Contracts re-launched on 14th July-2017)	Chana future prices NCDEX Rs/Quintal				
	11-Sep-19	09-Aug-19	Week ago 5 th Sep-19	Month Ago 13 th , Aug -2019	% Change over last month
19-Sep	4028	4000	3933	4302	-6.37
19-Oct	4051	4060	4035	4337	-6.59
19-Nov	4104	4117	4026	4352	-5.70

Sources: NCDEX

- No other pulse except Chana is traded in future in domestic market.
- No pulses are traded in future in international markets.

10. Trade Policy and Tariff Schedule

10.1 Export Policy: All varieties of pulses, including organic pulses, have been made 'free' for export without any quantitative ceilings w.e.f. 22nd November, 2017.

10.2 Import Policy: Import of all varieties pulses is free without any quantitative restrictions except Peas, Tur, Moong & Urad respectively. To protect the pulses farmers from cheap imports, Quantitative Restrictions (QRs) has been imposed on import of Tur to the tune of 4 lakh MT/fiscal year and on import of each Peas, Moong & Urad respectively to the tune of 1.5 lakh MT/fiscal year. The details of trade policy & duty structure in respect of major pulses are as under:

Table 3: Trade Policy & Duty Structure in respect of Pulses

Commodity	Trade Policy		Tariff Schedule	
	Export	Import	Bound Duty	Applied Duty
Peas (Matar) {HS Code 0713 10 00}	Free	Restricted#	50%	50% (w.e.f. 08th Nov, 2017)
Chickpeas (Chana) {HS Code 0713 20}	Free	Free	100%	60% (w.e.f. 1st Mar, 2018)
Moong {HS Code 0713 31 10}	Free	Restricted#	100%	0% (w.e.f. 08th June, 2006)
Urad {HS Code 0713 31 90}	Free	Restricted#	100%	0% (w.e.f. 08th June, 2006)
Lentil (Masur) {HS Code 0713 40 00}	Free	Free	100%	30% (w.e.f. 21 st Dec, 2017)
Pigeon pea (Tur/Arhar) {HS Code 0713 60 00}	Free	Restricted*	100%	10% (w.e.f. 28th Mar, 2017)
Other pulses {HS Code 071332, 33, 39, 50, 90}	Free	Free	100%	0% (w.e.f. 08th June, 2006)

Source: DoC, DoR and WTO

*Import subject to QRs of 4 lakh MT/fiscal year. #Import subject to QRs of 1.5 lakh MT/fiscal year.

10.3 Status of major pulses in Foreign Trade Agreements:

HS Code	Items	Status in FTAs/PTAs					
		ASEAN	SAFTA LDC	SAFTA Non-LDC	DFTP Scheme	Korea	Japan
0713.10	Peas	X	0 duty	8% MoP	10% MoP	SEN	X
0713.20	Chickpeas	0 duty	0 duty	8% MoP	0 duty	SEN	B 10
0713.31	Moong/Urad	0 duty	0 duty	8% MoP	0 duty	SEN	B 10
0713.40	Lentil	0 duty	0 duty	8% MoP	0 duty	SEN	B 10
0713.60	Tur (Arhar)	0 duty	0 duty	0 duty	0 duty	SEN	B 10

- X-Negative List
- SEN: Tariff reduced to 50% of applied duty on December 2017 (for Korea)
- B 10: Duties under this category shall be eliminated in 11 annual instalments from the date of coming into force the Agreement.
- **MoP (Margin of Preference)** - The reduction of the rate of duty on a product, provided for in a schedule to the Trade Agreement.

-
- **11. Significant Changes for the month:** Department of Revenue vide Notification No. 16/2019-Customs dated 15th June, 2019 has increased Basic Custom duty on Lentil (Masur) from existing 30% to 50%.

Disclaimer: The information and opinions contained in the document have been compiled from various sources believed to be reliable. This Department will not be liable for any losses and damages in connection with the uses of the information provided in the commodity profile.